

## Russell Road Wimbledon, SW19 1LW

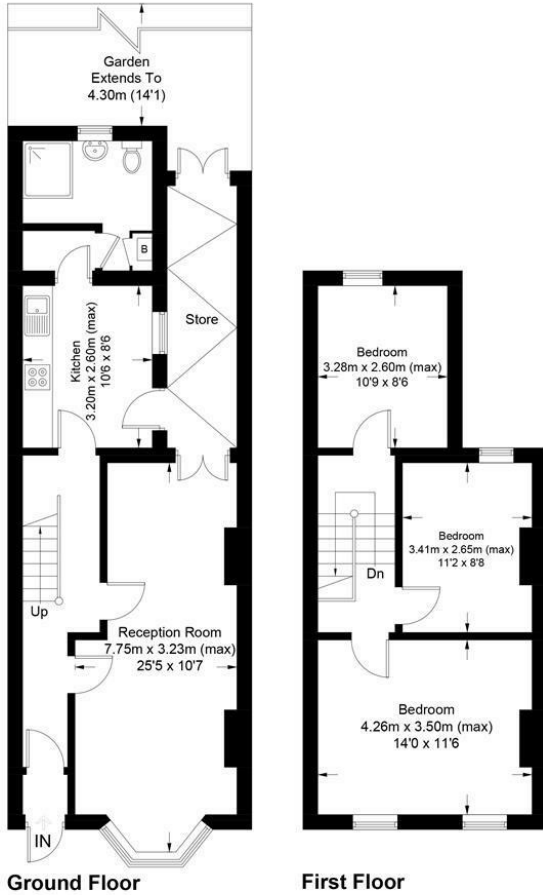
£785,000 Freehold



**A three bedroom Victorian property in need of modernisation and with no onward chain, located in the sought after Ministers area of Wimbledon close to the town centre and excellent schools. Benefitting from a double length living room, separate kitchen and well proportioned bedrooms, this fantastic opportunity also has great potential to extend subject to the usual consents.**

## Russell Road, SW19

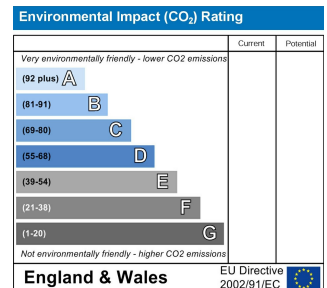
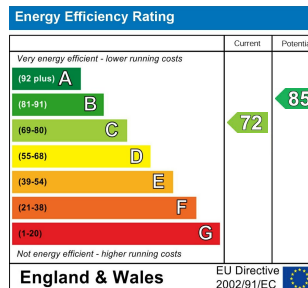
Approximate Gross Internal Area = 97.4 sq m / 1048 sq ft



This floor plan is for representation purposes only and is not drawn to scale.  
**The Gross Internal Area includes outbuildings shown on the plan.**  
 Whilst every attempt has been made to ensure the accuracy of the plan measurements of doors, windows and rooms are approximate only and should be checked before making any decisions reliant upon them.  
 Copyright Bespokeplans.co.uk (ID820183)



- Victorian Property
- In Need of Modernisation
- Three Bedrooms
- Potential to Extend STPP
- No Onward Chain
- Through Reception/Dining Room
- Sought After Ministers Area
- Close to Excellent Schools
- EPC Rating C



For Free Mortgage Quote and Best Mortgage Rates, call an Ellisons Mortgage Advisor on 020 8944 9494



Although these particulars are believed to be correct, their accuracy is not guaranteed and they do not form part of any contract.

Celebrating 30 years of successful Sales and Lettings in Merton

